

ZH480-S

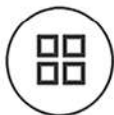
HANDHELD CORONA DETECTION CAMERA



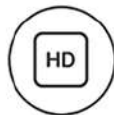
ZH480-S Corona Detection Camera is a cutting-edge handheld bi-spectral UV and Visible light imaging device for corona discharge detection. Nice out-of-band rejection performance achieves all-weather detection in daytime. Ergonomic & Compact coaxial optical design with a sleek and user-friendly interface, ZH480-S is easy to handle and take on the go. 5.5" 1080P touch screen; Bluetooth, WIFI, 5G, GPS, temperature and humidity sensor, Laser rangefinder, quick snap trigger, auto naming, etc. It is an ideal tool for substations, transmission and distribution lines, HV lab testing and maintenance services. Upgrade your inspection capabilities with the ZH480-S Camera – the future of corona defect diagnosis is here!



Wide Angle
FOV



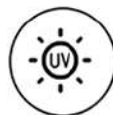
Multi Box
ROI



1080P
HD Resolution



Threshold
Alarm



Out-of-band
Rejection



5.5" LCD



GPS



WIFI



5G



Bluetooth



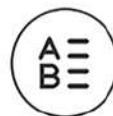
Touch
Screen



Temperature
Humidity Sensor



Laser
Rangefinder



Auto
Naming



Auto
Report



KEY FEATURES

Wide Angle F.O.V.

Wide angle F.O.V. facilitates the overall imaging of testing targets in limited testing space application such as substations/labs, greatly improving testing efficiency.

Multiple Communications

Multiple communications tools including WIFI, 5G, Bluetooth ensure the security and convenience of data. Quickly access private data platforms.

Various Auxiliaries

GPS, temperature & humidity sensor, laser rangefinder and 5" 1080P HD LCD make on-site testing more convenient and quantitative testing more accurate.

Innovative Design

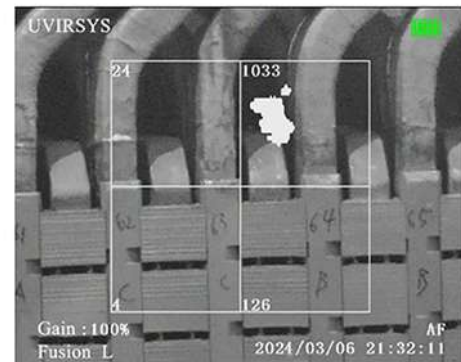
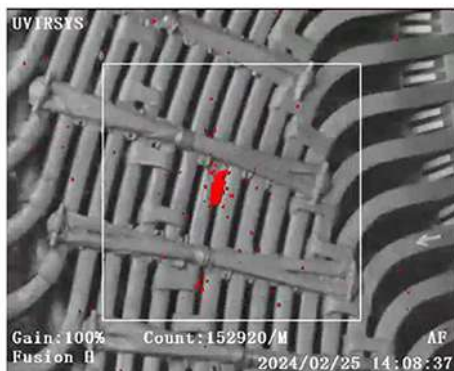
Ergonomic & Compact coaxial optical design with a sleek design. The single handle and touch screen design facilitates individual operations.

Practical Functions

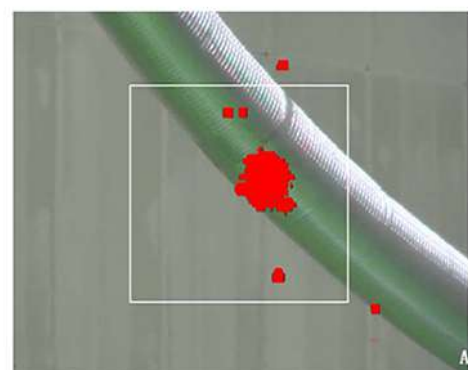
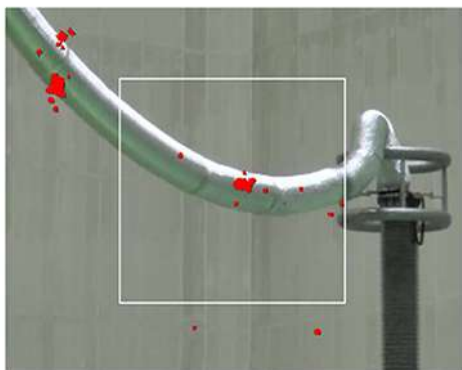
According to the pre-set threshold value of photon number, an automatic alarm will be triggered and shown on the screen. Hand trigger is designed for quick snap.

Automatic Result

The files for still images and videos will be automatically named in time sequence, and batch reports will be output, which will significantly reduce the time for later data processing and report.



5 kinds of photon counting boxes for quantitative analysis of different corona discharge zones of the same power facility



Continuous zoom in the fusion mode for wide-angle detection at long-distance

SPECIFICATIONS

PARAMETERS	DESCRIPTIONS
UV - OPTICAL PROPERTIES	
UV Spectral Range	240 ~280 nm
Our-of-Band Rejection	Provided, Can Be Used in Daytime Under Sunshine
Minimum Discharge Sensitivity	1.0 pC /12m (IEC 60270:2000)
Minimum RIV Sensitivity	3.6dB μ V (RIV) @10m (NEMA107-1987)
Minimum UV Sensitivity	2.0 \times 10 ⁻¹⁸ Watt/cm ²
Focus & Focus Range	Auto/Manual(Follow visible light), 1.0m ~ ∞ (Optional to 0.5m)
F.O.V & Zoom	20.0° * 11.2°, X2, X4
UV Integral Function	Provided, X2, X4, X8, X16
Gains & Detector Degradation	0-100% adjustable, Detector no degradation
Photons Counting	Provided
Counting Box	5 Kinds: Small, Medium, Big, Full Screen, Quad box
Alarm	Provided, Alarm Threshold Values Can Be Set
VISIBLE - OPTICAL PROPERTIES	
Focus & Focus Range	Auto, 1.0m ~ ∞
Minimum Visible Light Sensitivity	0.01 Lux
Zoom	Optical 4X, Digital 12X Continuous Zoom
Resolution	3840*2160
DISPLAY	
Modes	Combine (UV+VIS), UV only, Visible Only
UV/Visual Overlay Accuracy	1 mrad
LCD	5.5" Touch Screen
Brightness	1000 cd/cm ²
Display Resolution	1920*1080
Corona Color	7 Kinds: Red, White, Blue, Yellow, Cyan, Green, Magenta
Status Information Display	Battery, Gains, Photons Counting, Focus Mode, Date, Alarm

PARAMETERS	DESCRIPTIONS
CONTROLS AND OPERATION	
Status Modes	Real Time, Standby, Power off
Continuous Operation	Continuous Operation, No Cooling System
Controls Command	One for One Keyboard Input
LED Light	Provided, ON/OFF
Laser Rangefinder	Provided, 0.5-40m
Communications (Optional)	WIFI, 5G, Bluetooth
Temperature & Humidity Sensor	Provided
Auto naming	Provided
Auto Report	Provided
SAVE AND PLAYBACK	
Video	Provided, MP4
Still Images	Provided, JPG
Data Save	64G SD Card
Playback Function	Videos and Still Images
Audio Annotation	Microphone Voice Input
PHYSICAL PARAMETERS	
Battery	Rechargeable Li Battery
Working Hours	≥4h
Adapter	DC7V-9V 10W
Operation & Storage Temp	-20°C to + 55°C , -20°C to +60°C
IP Grade	IP54
Dimensions L*W*H	30.0 × 15.5 × 11.2 cm
Weight	1.2 kg
Configurations	Basic Units, 64G Card, Card Reader, Carrying Strap, AC-DC Adaptor, 2 Batteries, Carrying Case, Software, Manual