

ZH480-PRO CORONA DETECTION CAMERA

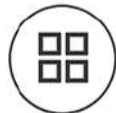


ZH480-PRO Corona Detection Camera is a cutting-edge portable high sensitivity bi-spectral UV and Visible light imaging device for corona discharge detection. Nice out-of-band rejection performance achieves all-weather detection in daytime.

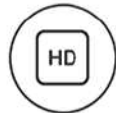
Ergonomic & Compact coaxial optical design with a sleek and user-friendly interface, ZH480-PRO is easy to handle and take on the go. With 6.5" big size 0-90° flappable screen with 1400cd/m² brightness; temperature and humidity sensor, Laser rangefinder etc, ZH480-PRO is an ideal tool for research, substations, transmission and distribution lines, railway, HV lab testing and maintenance services!



Telephoto
FOV



Multi Box
ROI



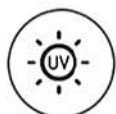
1080P
HD Resolution



6.5" LCD
Screen



Threshold
Alarm



Out-of-band
Rejection



Temperature
Humidity Sensor



Laser
Rangefinder



GPS



KEY FEATURES

High Sensitivity

Discharge sensitivity up to 1.0pC at 15m, UV Sensitivity up to 2.0×10^{-18} Watt/cm² and RIV Sensitivity 3.6dB μ V(RIV) for effective test in long distance and discharge inception test.

Big LCD

6.5" big LCD, 0-90° flappable screen with visor, 1400cd/m² high brightness screen which helps to see images clearly in strong sunlight.

Telephoto F.O.V.

10°- 1.25° (H) & 7.2°- 0.9° (V) F.O.V. facilitates the imaging of testing targets in long distance such as transmission line, greatly improving testing efficiency.

Innovative Design

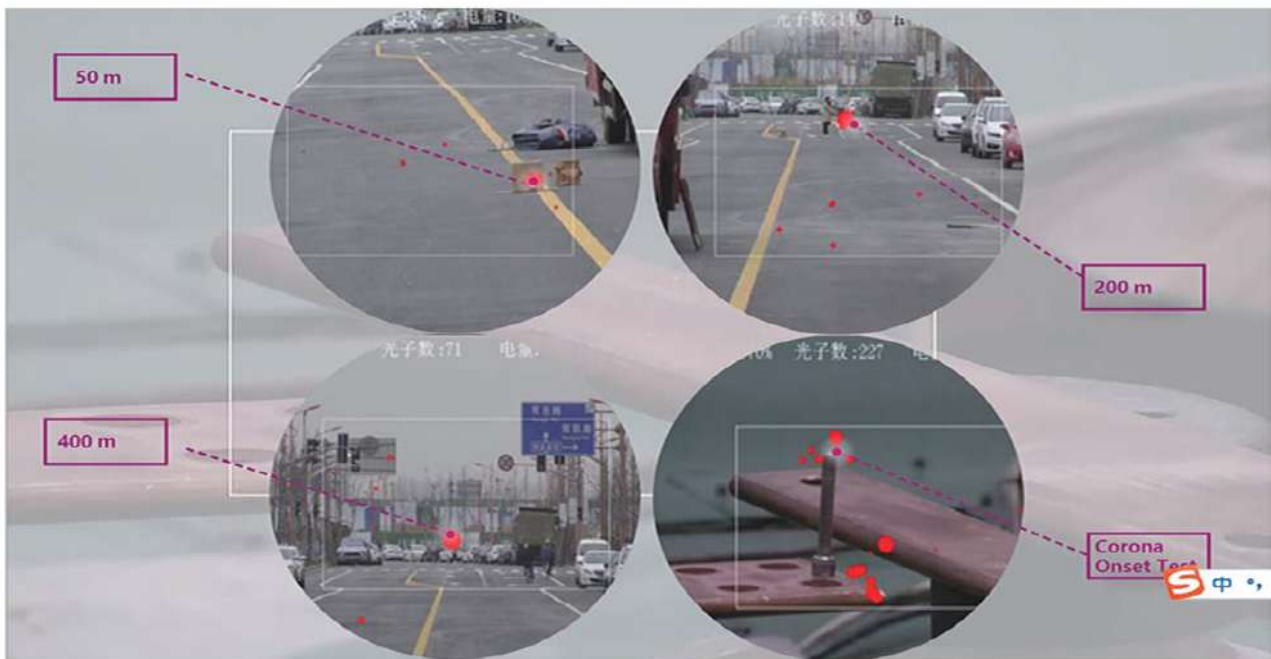
Ergonomic & Compact coaxial optical design with a sleek design. The single handle and touch screen design facilitates individual operations.

Various Auxiliaries

GPS, temperature & humidity sensor, laser rangefinder makes on-site testing more convenient and quantitative testing more accurate.

Practical Functions

According to the pre-set threshold value of photon number, an automatic alarm will be triggered and shown on the screen. 25x optical and 16x digital zoom.



Inspection at 400m and corona onset test can be conducted by ZH480-PRO

SPECIFICATIONS

PARAMETERS	DESCRIPTIONS
UV - OPTICAL PROPERTIES	
UV Spectral Range	240 ~280 nm
Our-of-Band Rejection	Provided, Can Be Used in Daytime Under Sunshine
Minimum Discharge Sensitivity	1.0 pC /15m
Minimum RIV Sensitivity	3.6dB μ V (RIV) @10m,1MHz
Minimum UV Sensitivity	2.0 \times 10 ⁻¹⁸ Watt/cm ²
Focus & Focus Range	Auto/manual focus for both UV and visible channels, 0.5m ~ ∞
F.O.V	10°- 1.25° (H) ,7.2°- 0.9° (V)
UV Integral Function	OFF, X2, X4, X8, X16
Gains	0-100%, Adjustable
Photons Counting	Provided
Counting Box	5 Kinds: Small, Medium, Big, Full Screen, Quad box
Alarm	Provided, Alarm Threshold Values Can Be Set
VISIBLE - OPTICAL PROPERTIES	
Focus & Focus Range	Auto, 0.5m ~ ∞
Minimum Visible Light Sensitivity	0.05 Lux
Zoom	X25 Optical, 16 Digital
DISPLAY	
Modes	Combine (UV+VIS), UV only, Visible Only
UV/Visual Overlay Accuracy	1 mrad
LCD size	6.4" Screen
Brightness	1400 cd/m ² ,adjustable backlight
LCD Flippable	Yes
Display Resolution	1280*720
Corona Color	7 Kinds: Red, White, Blue, Yellow, Cyan, Green, Magenta
Status Information Display	Battery, Gains, Photons Counting, Focus Mode, Date, Alarm

PARAMETERS	DESCRIPTIONS
CONTROLS AND OPERATION	
Status Modes	Real Time, Standby, Power off
Continuous Operation	Continuous Operation, No Cooling System
Controls Command	One for One Keyboard Input
LED Light	Provided, ON/OFF
Laser Rangefinder	Provided, 0.5-40m
GPS	Provided
Temperature & Humidity Sensor	Provided
SAVE AND PLAYBACK	
Video	Provided, MP4(AVI, MOV Optional)
Still Images	Provided, JPG(JPEG, GIF, PNG, BMP Optional)
Data Save	64G SD Card
Playback Function	Videos and Still Images
Audio Annotation	Microphone Voice Input
PHYSICAL PARAMETERS	
Battery	Rechargeable Li Battery
Working Hours	4h
Adapter	DC15V 14.8W
Storage and Operation Temp	-20°C — +55°C
IP Grade	IP54
Dimensions L*W*H	29.0 × 19.0 × 10.7 cm
Weight	2.7 kg
Configurations	Basic Units with Standard tripod mount, 64G Card, Card Reader, Lens cap, Carrying Strap, AC-DC Adaptor, 2 Batteries, Carrying Case, Software, Manual

