

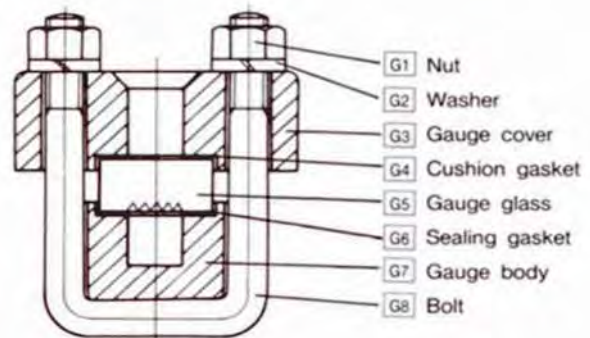
◆ ZIG-ZAG TYPE LEVEL GAUGE

DESCRIPTION

This zig-zag type level gauge is composed of our standard SRZG and SRTG level gauge for use in large storage tanks and equipment requiring surveillance in all sections. This gauge is particularly popular for surveillance of liquid level at high places.

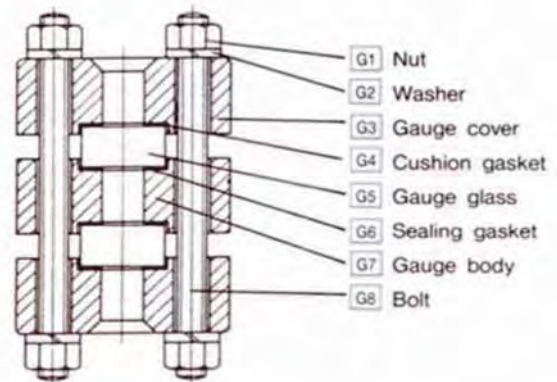
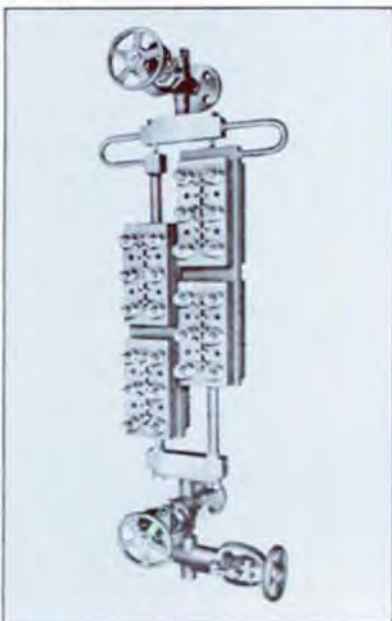
MODEL

SRZG - 1



REFLEX TYPE
 MATERIAL : CARBON STEEL
 STAINLESS STEEL
 PRESSURE : 1 ~ 50kg/cm²
 SIZE : 20A, 25A

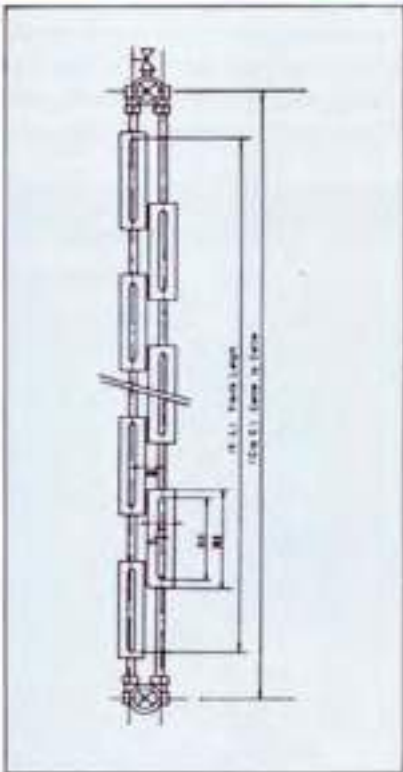
STZG - 1



TRANSPARENT TYPE
 MATERIAL : CARBON STEEL
 STAINLESS STEEL
 PRESSURE : 1 ~ 200kg/cm²
 SIZE : 20A, 25A

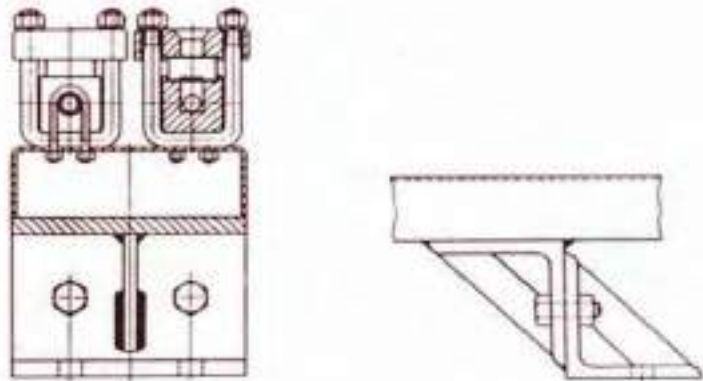
◆ HEATING OR COOLING TYPE LEVEL GAUGE

DRAWING



SUPPORTING BRACKETS

The gauge is so designed that supporting brackets as illustrated right and below can be fitted to protect a long multiple-connected gauge from distortion or fall down. A scale plate to mount alongside the gauge is available to observe the liquid level more accurately.



DIMENSIONS

unit : mm

No. of gauge mounted	GLASS No. 9		GLASS No. 8		GLASS No. 7	
	H	B	H	B	H	B
4 gauges	1530	1200	1450	1120	1290	960
5 "	1850	1515	1750	1415	1550	1215
6 "	2130	1800	2010	1680	1770	1440
7 "	2450	2115	2310	1975	2030	1695
8 "	2710	2380	2550	2220	2230	1900
9 "	3050	2715	2870	2535	2510	2175
10 "	3300	2970	3100	2770	2700	2370
11 "	3650	3315	3430	3095	2990	2655
12 "	3890	3560	3650	3320	3170	2840
13 "	4250	3915	3990	3655	3470	3135
14 "	4480	4150	4200	3870	3640	3310
15 "	4850	4515	4550	4215	3950	3615
16 "	5130	4800	4810	4480	4170	3840
17 "	5450	5115	5110	4775	4430	4095
18 "	5750	5415	5390	5055	4670	4335
19 "	6050	5715	5670	5335	4910	4575
20 "	6350	6015	5950	5615	5150	4815

H : Center to Center distance, B : Visible length

◆ LINED TYPE LEVEL GAGE

DESCRIPTION

Severe demands are often placed on liquid level gauges in terms of resistance to corrosion, and this is accomplished by lining or coating the metal in contact with the liquid. The most important aspect of this process is the preparation of the metal substrate. For this, FTC factory employs only the most modern machinery and highly experienced personnel. The following anti-corrosion lining and coating materials are used.

Hard rubber, trifluoride resin, lead.

MODEL

SRG-LD



MATL Carbon steel

SRLG-LD



MATL Carbon steel

◆ BICOLOR TYPE LEVEL GAUGE

DESCRIPTION

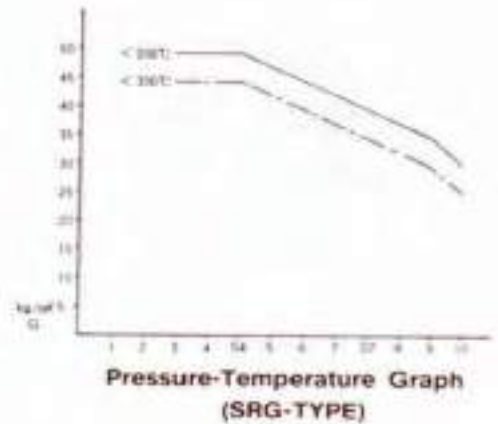
With this level gauge, a special reflex type gauge glass with wider V shaped single refractive groove and red coating is incorporated. It provides a clear observation of liquid level indicating vapor portion red and liquid portion black. This gauge glass is not of JIS standard.

MODEL

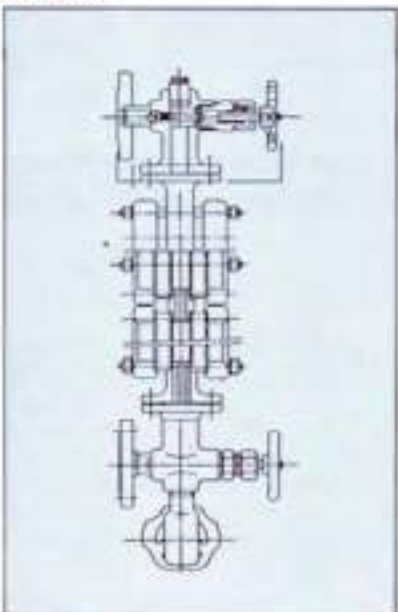
SRG-IBC



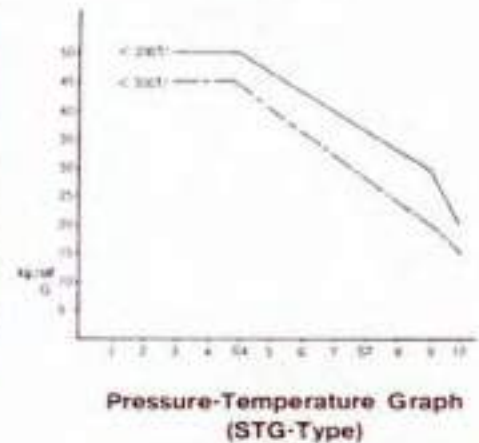
Type SRG(Color)



STG-IBC



STG-(Color)
Fig. 4.



Pressure-Temperature Graph
(STG-Type)

◆ WELDING PAD GAUGES

DESCRIPTION

The gauges are welded directly to the gauge body. The tables below show visible lengths. Depending upon the application, extralong types are also manufactured.

MODEL

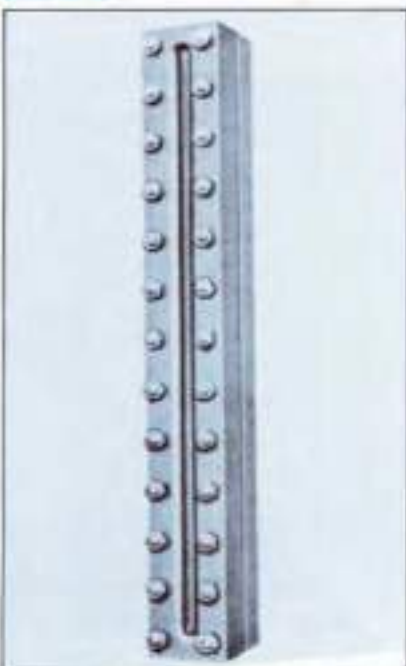
SWPG-1



Type	Visible diam	Body diam
W- 20	20	75
W- 24	25	80
W- 40	40	100
W- 50	50	110
W- 70	70	135
W- 80	80	145
W- 90	90	155
W- 100	100	185
W- 130	130	210
W- 160	160	240
W- 200	200	280

Pressure 3~10kg/cm²-g
Material SS, SUS

SWPG-2

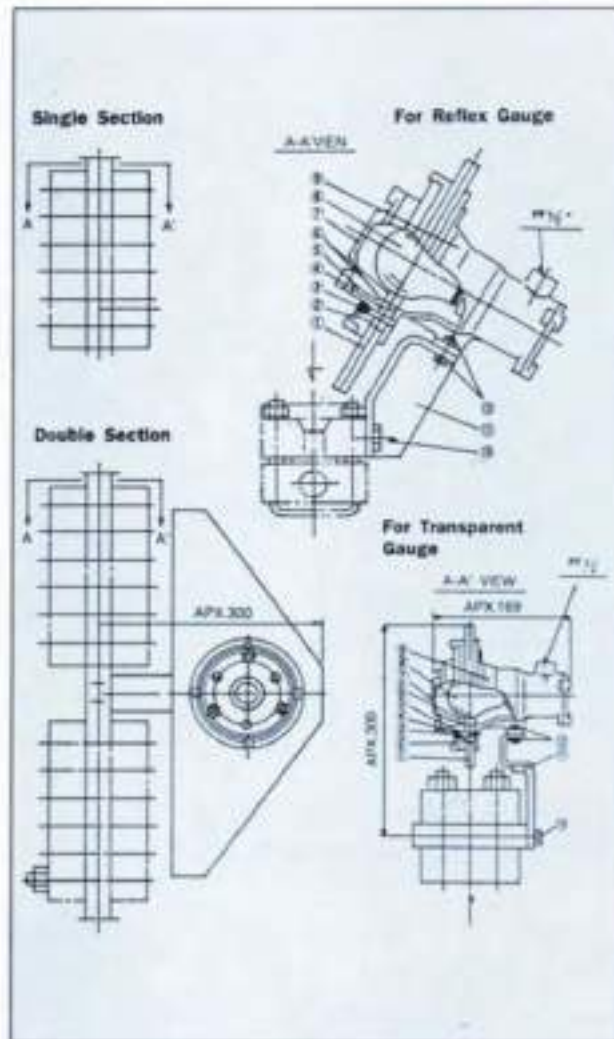


Type	Visible length	Visible width	G · L
R- 3	140	16	185
T- 3			
R- 4	165	16	210
T- 4			
R- 5	195	16	240
T- 5			
R- 6	225	16	270
T- 6			
R- 7	255	16	300
T- 7			
R- 8	295	16	340
T- 8			
R- 9	315	16	360
T- 9			
R- 10	375	16	420
T- 10			

R = reflex
T = transparent
Pressure 30kg/cm²-g
Material SS, SUS

◆ ILLUMINATOR TYPE LEVEL GAUGE

MODEL



SPECIFICATION

ELECTRICITY

- Voltage : 110 ~ 220 V
60Hz
- Bulb Light : 30W, 60W, 100W
- Explosion-proof : d2G4.
- Approved by JLM :
- Application :

Complete Range of Size: Single and Double Section
 FTC Explosion-proof illuminators are made in Single and Double Section styles for Transparent and Reflex Gauges. Double Section illuminators require only one bulb for complete illumination of two gauge sections.

No.	PARTS	No. of UNIT	MATERIAL
1	REFLECTAR	1	METHACRYLATE
2	COVER	1	AC4C
3	BOLT	1	SUS304
4	GLASS PLATE	3	GLASS
5	O'RING	1	NBR
6	GASKET	1	T S 1000
7	COVER	1	AC4C
8	BULB LIGHT	1	
9	LIGHT HOUSING		AC4C
10	BOLT	2	SS41
11	HOLDER	1	SS41
12	BOLT NUT	2	SS41

H Level Gauge

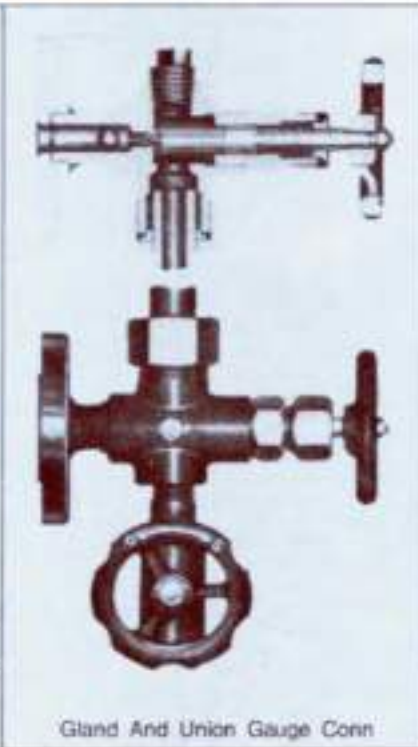
◆ STANDARD GAUGE VALVE

GAUGE VALVE

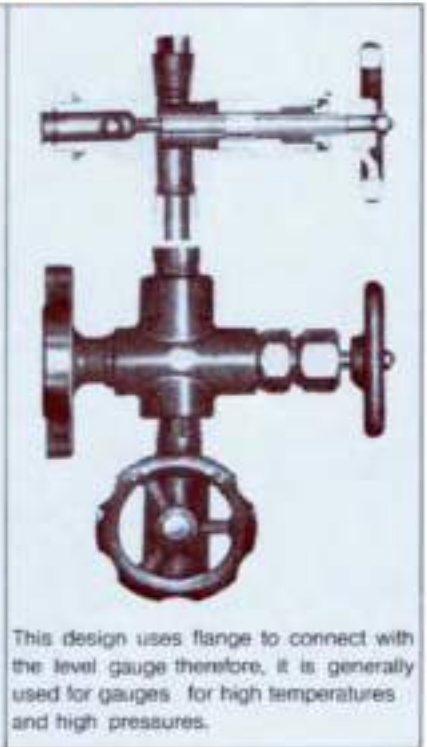
■ OFF-SET TYPE



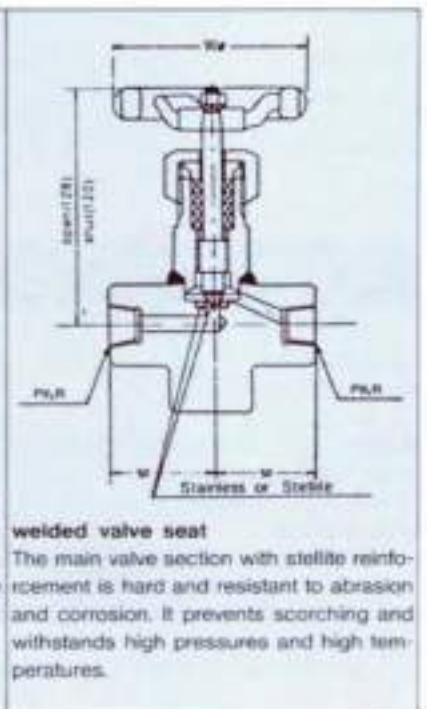
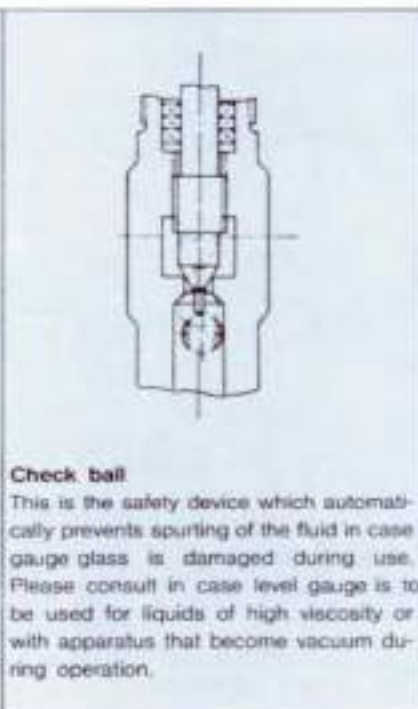
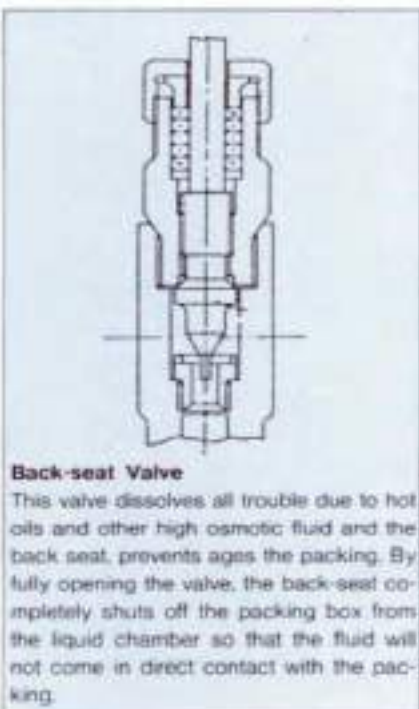
■ CROSS TYPE



■ CROSS TYPE



VALVE SEAT



◆ LEVEL GAUGES FOR STEAM SERVICE

TYPES AND MODELS OF LEVEL GAUGES

The listed water level gauges are for use with boiler drums and other steam services that are used under high pressure and high temperature. To cover a wide range of their applications from low pressure to ultra high pressure of 150kg · f/cm² under saturated temperature, various reflex or transparent type of two-color or multi-ports type level gauges are offered to meet with various industrial requirements.

RANGE OF PRESSURE	TYPES & MODELS	VALVES TO BE CONNECTED WITH	MAXIMUM PRESSURE (AT SAT. TEMPERATURE)	SIZES OF GLASS
-------------------	----------------	-----------------------------	--	----------------

REFLEX TYPE

Low	SRG - 1B	UNION BONNET	30kg/cm ²	No. 6 ~ No. 9
	SRG - 5B	BOLTED BONNET	100kg/cm ²	

TRANSPARENT · TWO-COLOR TYPE

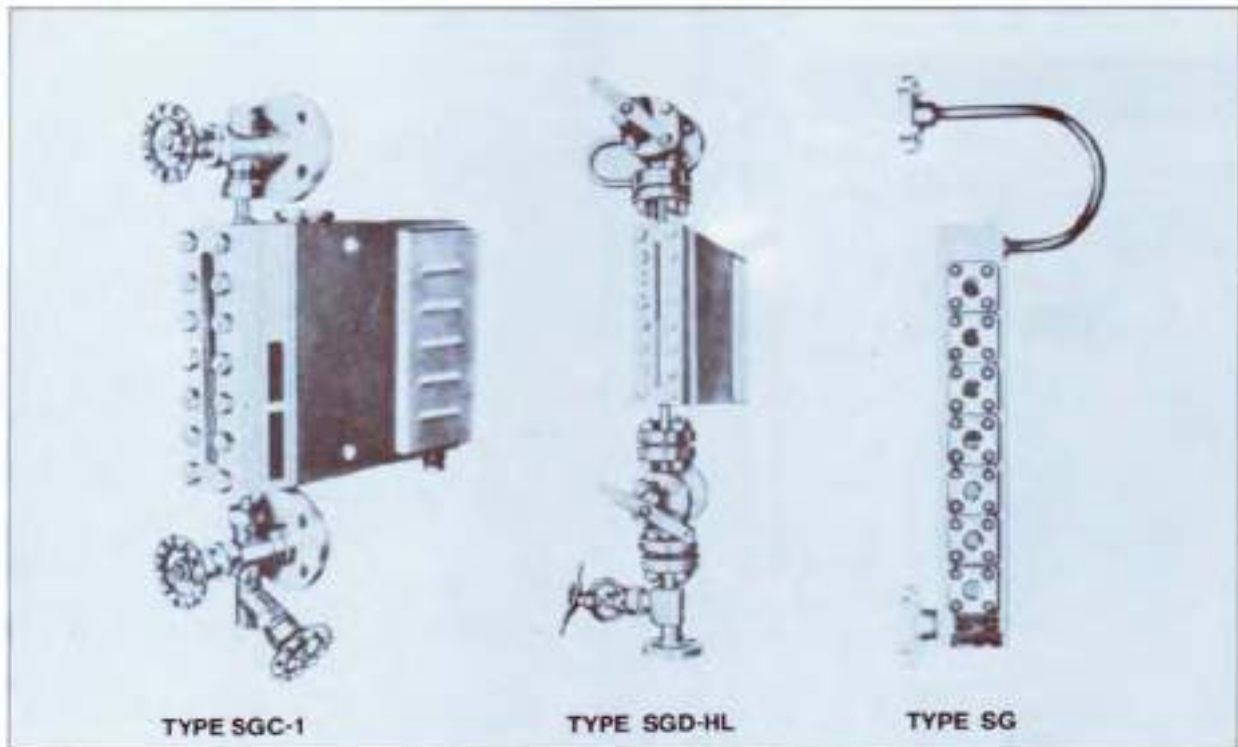
Low	STG - 1B	UNION BONNET	0 ~ 30kg/cm ²	No. 6 ~ No. 9
Medium	STG - 5B	BOLTED BONNET	30 ~ 60kg/cm ²	
	STG - 10B	BOLTED BONNET	60 ~ 80kg/cm ²	
High	STG - 20B	BOLTED BONNET	80 ~ 120kg/cm ²	No. 6 ~ No. 7

TWO-COLOR MULTI-WINDOW TYPE

Ultra high	SGC - 1B	UNION BONNET	20 ~ 40kg/cm ²	No. 6 ~ No. 7
	SGC - 2B		60kg/cm ²	
	SGC - 10B, SGC - 20B	BOLTED BONNET	30 ~ 60kg/cm ²	No. 6 ~ No. 9
	SGC - 200B		150kg/cm ²	
	SGC - 300B		250kg/cm ²	

◆ TYPES OF BOILER WATER LEVEL GAUGES

Steam Space – Red
Boiler Water – Blue the level confirmed.



FEATURES OF TWO COLORS WATER LEVEL GAUGE

■ Distinct water level :

The water level is markedly distinct and confirmed from far distance since an fitted at the rear of water level gauge by which visible surface is separated into two section, one is red-steam space, and another blue-boiler water.

■ Correct water level is indicated always :

As the Two-Color separation is based on the principle of optical science, normal water level can be indicated always even in an instantaneous variance of water level.

■ Remote observation possible :

The water level appeared on the visible surface can be transferred to the operation (control) room by fitting several reflex mirrors(to the most convenient place for an operator to watch).

As the most improved method, television observation is utilized, therefore, we have also researched and developed those water level gauges suitable for television observation, and obtained good experimental results by changing filter glass of two colors(red and blue) and employed in great numbers.

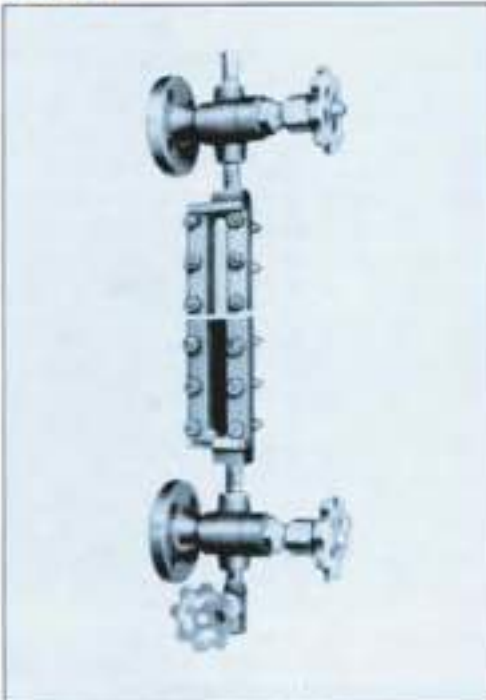
◆ REFLEX TYPE LEVEL GAUGE

DESCRIPTION

Reflex type gauge glass, which have several grooves on the back face of the flat glass for reflective purpose, indicates water portion black and steam portion silvery white due to reflection effect, assuring accurate observation of the water level.

MODEL

SRG-1B



MATERIAL : CARBON STEEL
 STAINLESS STEEL BRONZE
 PRESSURE : 1 ~ 30kg/cm²
 SIZE : 15A, 20A, 25A

SRG-5B



MATERIAL : CARBON STEEL
 STAINLESS STEEL
 PRESSURE : 1 ~ 100kg/cm²
 SIZE : 15A, 20A, 25A

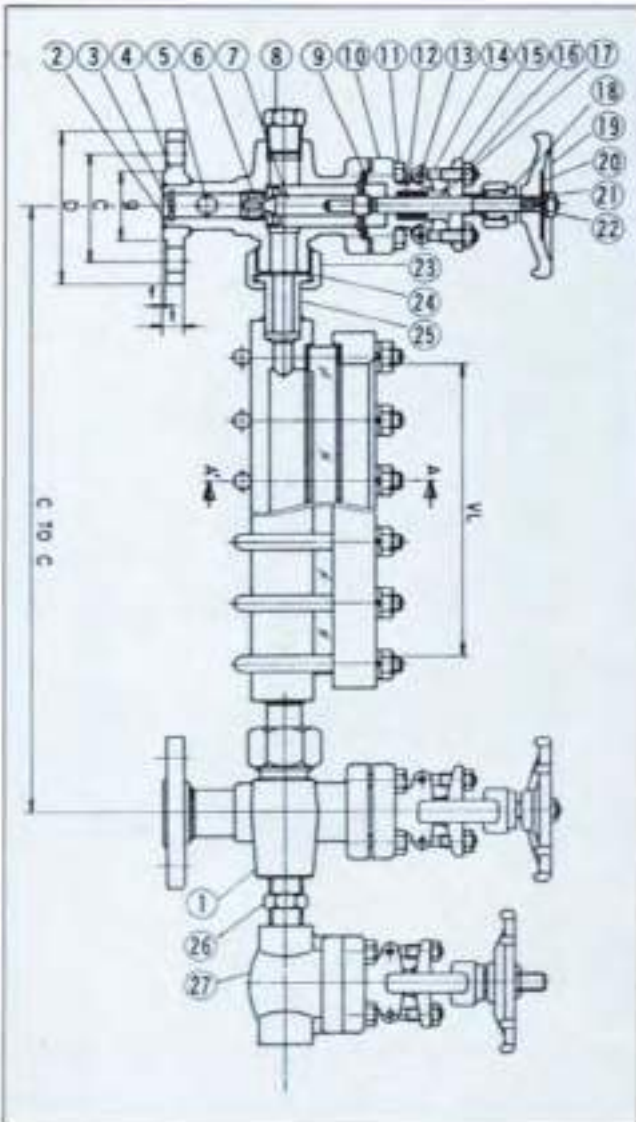
SPECIFICATIONS

- TYPE : REFLEX
- VISIBLE LENGTH : 171 TO 4000mm MAX
- MAXIMUM NO. of SECTION : 5 SECTION
- VESSEL CONNECTION : 3/4 or 1" FLANGED BY YOUR REQUIREMENT.
- WORKING PRESSURE :
- Shell test pressure : Working pressure × 1.5

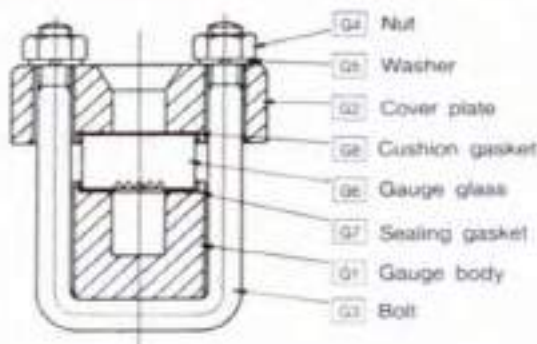
◆ GENERAL ARRANGEMENT DRAWINGS

DRAWINGS

SRG-5B TYPE



No.	PARTS	QTY
1	LOWER VALVE BODY	1
2	UPPER VALVE BODY	1
3	RETAINER	2
4	FLANGE	2
5	CHECK BALL	2
6	SEAT	2
7	STEM	2
8	PLUG	1
9	GASKET	2
10	BONNET	2
11	BONNET BOLT	8
12	GLAND PACKING	7
13	EYE BOLT PIN	4
14	EYE BOLT	4
15	GLAND FLANGE	2
16	EYE BOLT NUT	4
17	GLAND	2
18	SLEEVE	2
19	HAND WHEEL	2
20	NAME PLATE	2
21	WASHER	2
22	LOCK NUT	2
23	CONNECTION NUT	2
24	GASKET	3
25	CONNECTION	2
26	NIPPLE	1
27	DRAIN VALVE	1



◆ TRANSPARENT TYPE LEVEL GAUGE

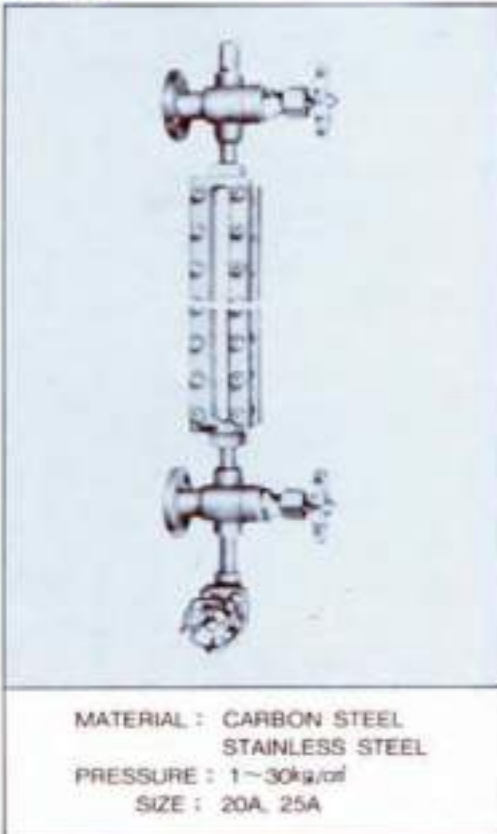
DESCRIPTION

Designed for a wide range of pressure and temperature applications. The transparent type level gauge is suitable for observation of the level of corrosive and colored liquids. The type is preferably used for reservoir tanks that require a comparatively long visible length.

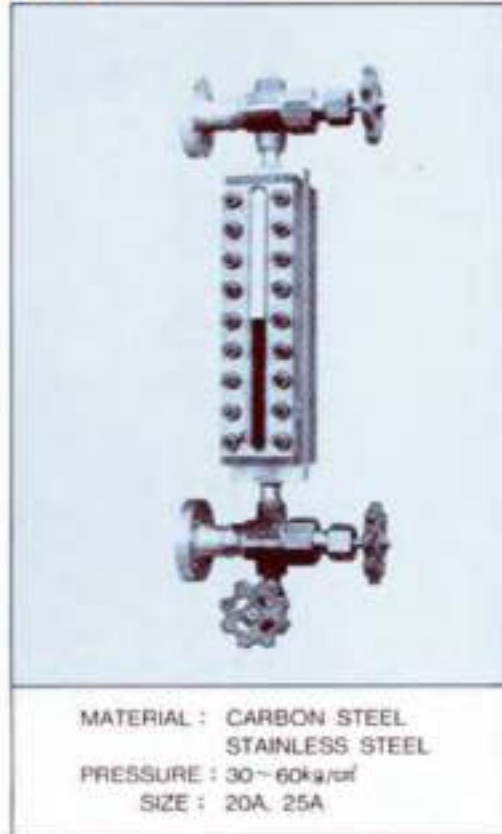
The type of level gauge utilizes two pieces of tempered flat gauge glasses, each of which is placed in front and rear of gauge body and is sandwiched by gauge covers and tightened by bolts from both sides of the gauge.

MODEL

STG-1B



STG-5B



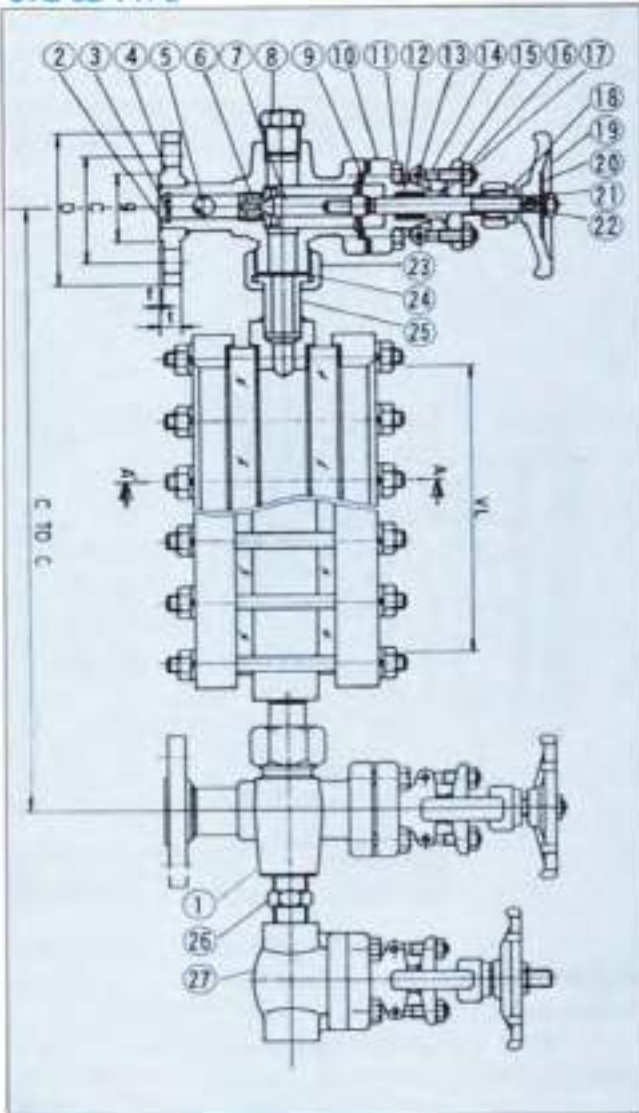
SPECIFICATIONS

- TYPE : TRANSPARENT
- VISIBLE LENGTH : 171 TO 4000mm MAX
- MAXIMUM NO. of SECTION : 5 SECTION
- VESSEL CONNECTION : 3/4 or 1" FLANGED BY YOUR REQUIREMENT.
- Shell test pressure : Working pressure × 1.5

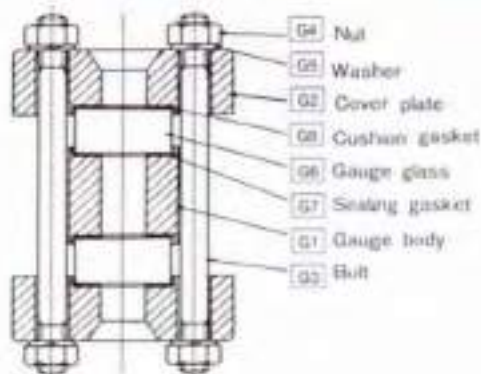
◆ GENERAL ARRANGEMENT DRAWINGS

DRAWINGS

STG-5B TYPE



No.	PARTS	QTY
1	LOWER VALVE BODY	1
2	UPPER VALVE BODY	1
3	RETAINER	2
4	FLANGE	2
5	CHECK BALL	2
6	SEAT	2
7	STEM	2
8	PLUG	1
9	GASKET	2
10	BONNET	2
11	BONNET BOLT	8
12	GLAND PACKING	7
13	EYE BOLT PIN	4
14	EYE BOLT	4
15	GLAND FLANGE	2
16	EYE BOLT NUT	4
17	GLAND	2
18	SLEEVE	2
19	HAND WHEEL	2
20	NAME PLATE	2
21	WASHER	2
22	LOCK NUT	2
23	CONNECTION NUT	2
24	GASKET	3
25	CONNECTION	2
26	NIPPLE	1
27	DRAIN VALVE	1



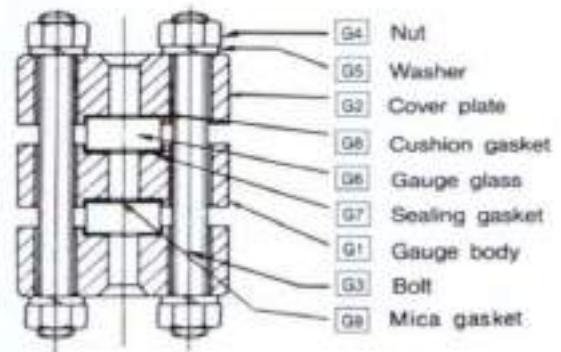
◆ TRANSPARENT TYPE LEVEL GAUGE

DESCRIPTION

For general information of ordinary transparent level gauges, please refer to Page 9. However, mica gasket is employed and placed on the liquid side surface of the glass to protect the glass from erosion in steam service where the gauge is used under such high temperature and pressure as to cause the erosion. The cover plate of the gauges, Models STG-10 and STG-20, is also provided with rib reinforcement.

MODEL

STG-10B



SPECIFICATIONS

- SIZE OF GLASS : NO. 6~NO. 9
- MAX. PRESSURE : • STG-10 B : 60~80kgf/cm²
• STG-20 B : 80~120kgf/cm²
- MAX. TEMPERATURE : • STG-10 B : SAT. TEMPERATURE.
• STG-20 B : SAT. TEMPERATURE.

DIMENSIONS

Unit : mm

Types & Models	Side of Gauge mounting against boiler drum	Direction of Gauge front	Dimensions				
			Glass No.	H (C to C)	ℓ ₁	ℓ ₂	B (V. length)
STG-10B	 Right hand	Front only	6	540	270	270	225
			7	570	285	285	255
	 Left hand		8	610	305	305	295
			9	630	315	315	315
STG-20B	 Right hand	Front only	6	610	305	305	225
			7	640	320	320	255
	 Left hand						

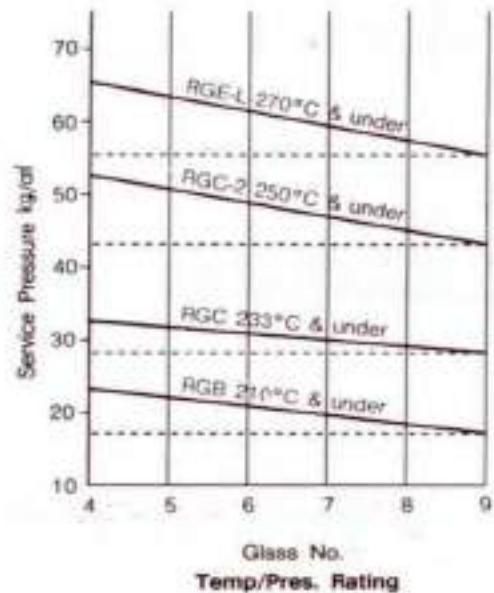
◆ TRANSPARENT & TWO-COLOR TYPE GAUGE

DESCRIPTION

This water level gauge is of the most excellent construction and function as the two-color type gauge, especially has enjoyed great reputation for the ones installed on the boilers at the independent power generation plant or vessel.

MODEL

SGC-1B



SPECIFICATIONS

- SIZE OF GLASS : NO. 6~NO. 9
- MAX. PRESSURE : • STC-1 B : 20~40kgf/cm²
• STC-2 B : 60kgf/cm²
- MAX. TEMPERATURE : • STC-1 B : SAT. TEMPERATURE.
• STC-2 B : SAT. TEMPERATURE.

DIMENSIONS

Unit : mm

Type	Installation Direction		Gauge Facing Direction	Glass No.	Dimension(mm)				Gauge Valve or Cock Type
	Left-Hand	Right-Hand			H	ℓ ₁	ℓ ₂	V. L	
SGC-1B			Facing any Direction	No. 6	500	250	250	226	Gauge Cock
				No. 7	530	265	265	256	
				No. 8	570	285	285	296	Gauge Valve
				No. 9	600	300	300	316	
SGC-2B			Facing Front	No. 5	520	160	360	196	Gauge Valve
				No. 6	550	175	375	226	
				No. 7	580	190	390	256	
				No. 8	620	210	410	296	

◆ TRANSPARENT & TWO-COLOR TYPE GAUGE

CONSTRUCTION & FUNCTIONING

Construction and Functioning

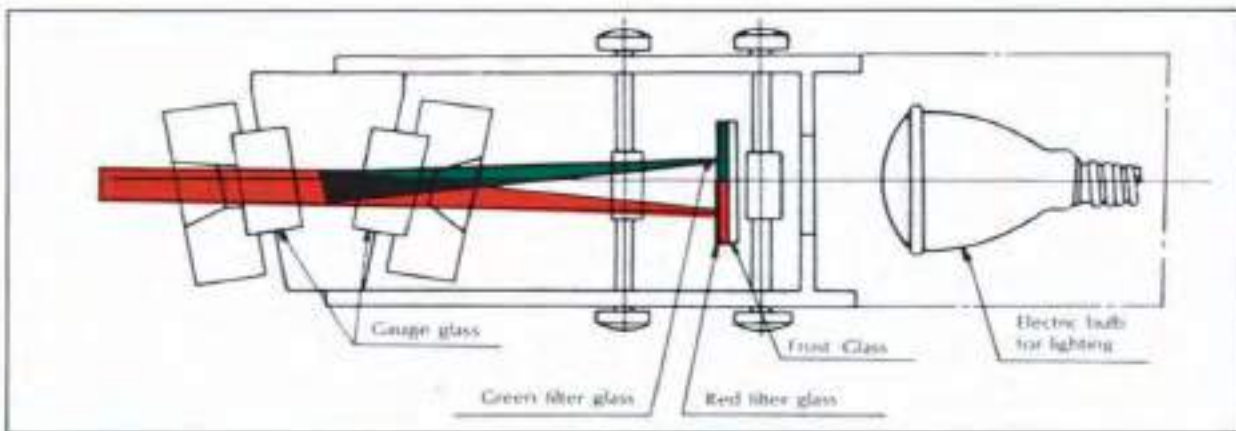
Two-Color water level gauge applies the principle of optical science that the refractive index of light is different when it passes through steam space and boiler water section, separating red (steam space) and blue (boiler water section).

The gauge is of construction that a special lamp, colored glass plate (red, blue) and a condensing lens are provided inside the illuminator installed at the rear of water level gauge.

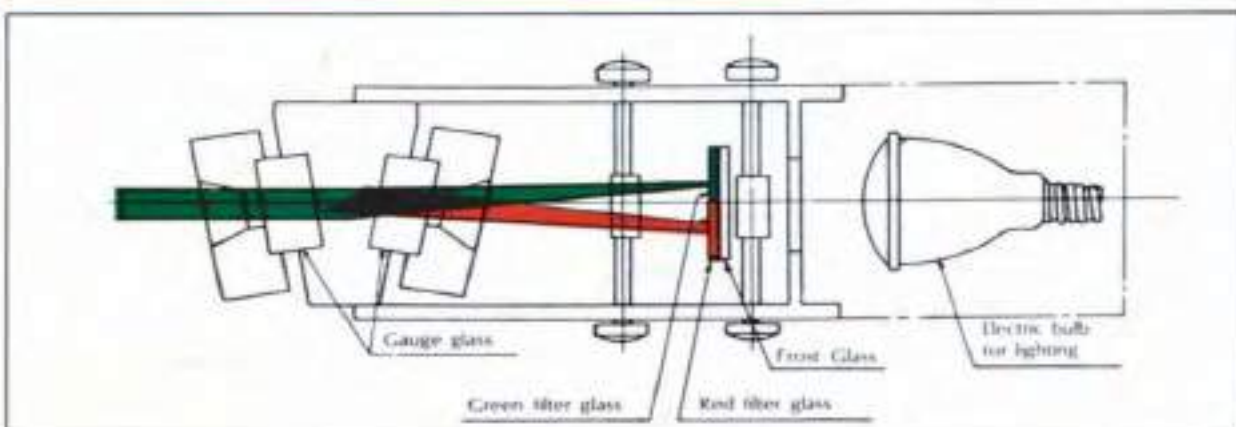
The light separated into two colors by passing through the colored plates (red, blue) enters into visible window of water level gauge after travelling angle is changed a little by the next condensing lens. Then, when the light passes through the trapezoid chamber which consists of two sheets of gauge glass when it is steam blue light reflected in the chamber and does not appear outside interrupted by gauge cover and only red refracted ray appears on the visible face after passed through inside of water level gauge.

And when it is boiler water in the chamber, contradictory phenomenon will occur, that is, the red refracted ray does not appear outside interrupted and only blue refracted ray appears on the visible face. As mentioned above, the filter glass, a condensing lens, gauge glass are combined in the optically position so that correct water level may appear by instantaneously sensing the level variance.

IN THE CASE OF STEAM



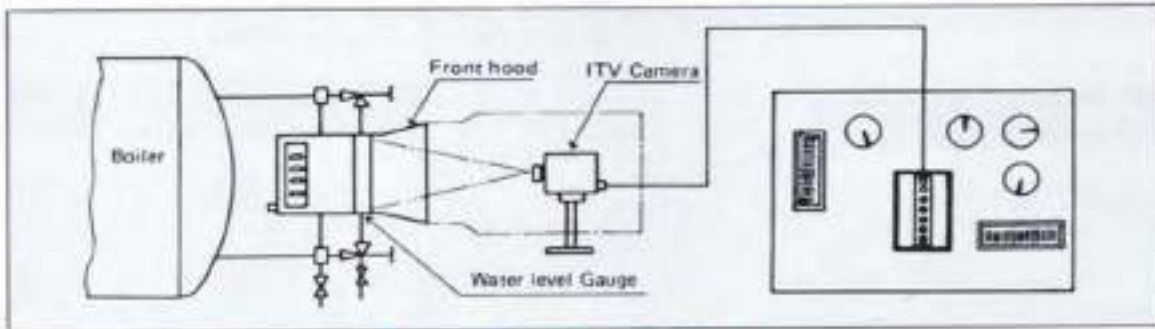
IN THE CASE OF BOILER WATER



◆ OBSERVATION METHOD

OBSERVATION BY TELEVISION

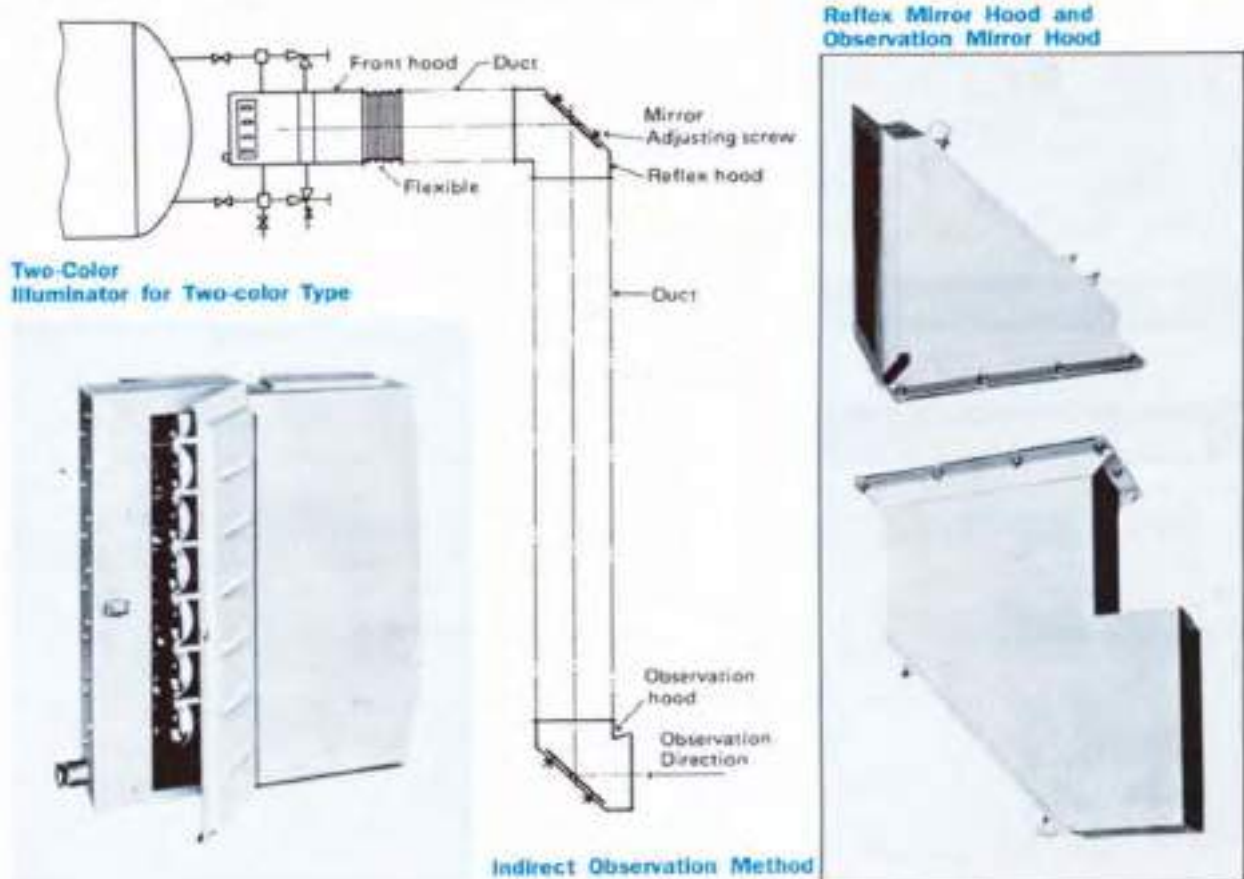
Steam space appears white and water section black. Filter is not red/blue, so please specify clearly as "Television Observation" without fail as special color is used.



Television Observation Device

OBSERVATION BY REFLEX MIRROR

Several hoods with reflex mirror are attached, and observation is performed at the most convenient place by operators.



Two-Color Illuminator for Two-color Type

Reflex Mirror Hood and Observation Mirror Hood

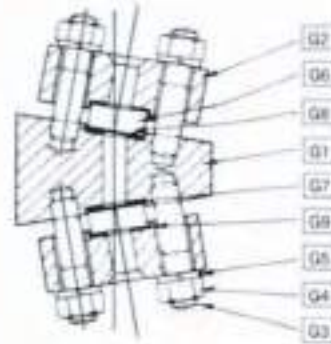
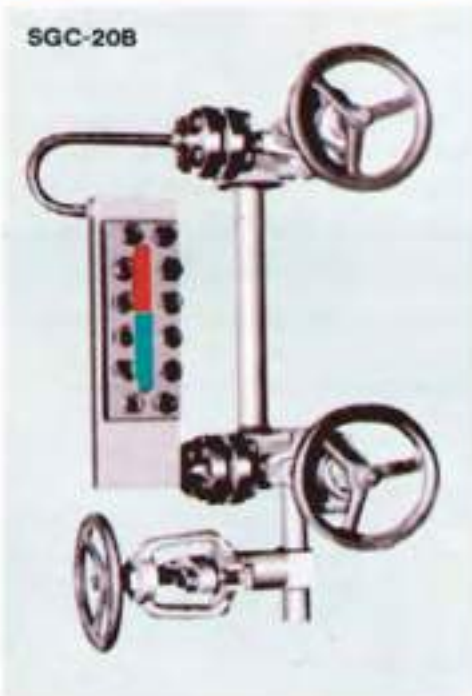
Indirect Observation Method

◆ TRANSPARENT & TWO-COLOR TYPE GAUGE

DESCRIPTION

Body of the two color type gauges are V shaped at an angle, as you see in the following cross sectional view, in order to split light from illuminator (installed behind the gauge) into two colors which are green and red. The cover plates of these models are all provided with rib reinforcement.

MODEL



- 1. Gauge body
- 2. Cover plate
- 3. Bolt
- 4. Nut
- 5. Washer
- 6. Gauge glass
- 7. Sealing gasket
- 8. Mica gasket
- 9. Cushion gasket
- 10. Packing strip

SPECIFICATIONS

- SIZE OF GLASS : NO. 6~NO. 9
- MAX. PRESSURE : • 30~60kgf/cm²
- MAX. TEMPERATURE : • SAT. TEMPERATURE.

DIMENSIONS

Types & Models	Side of Gauge mounting against boiler drum	Direction of Gauge front	Dimensions				
			No.	Center to Center H	ℓ ₁	ℓ ₂	(V. length) B
SGC-20B		Front Only	6	510	195	315	225
			7	530	200	330	255
			8	570	220	350	295
			9	590	230	360	315
SGC-10B (Top & Bottom)		Free choice	6	540	270	270	225
			7	570	285	285	255
			8	610	305	305	295
			9	630	315	315	315

Unit : mm

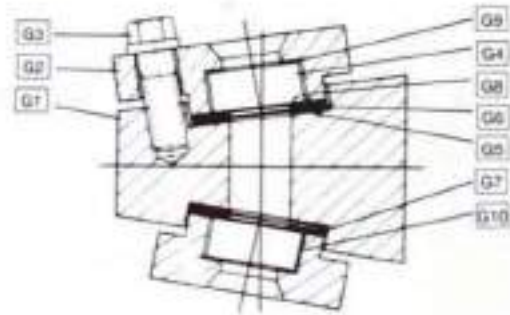
◆ TWO-COLOR MULTI-PORT TYPE LEVEL GAUGES

DESCRIPTION

This multi-window two color level gauge is provided with from 5 or 7 round windows or ports and is designed to handle the pressures and temperatures higher than the single window type level gauges. Impacts from external pressure and heat are distributed to each of the ports, thereby eliminating or minimizing the glass breakage and increasing the structural durability.

MODEL

5GC-200B



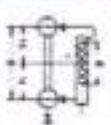
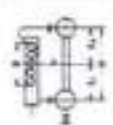
- 1. Gauge body
- 2. Gauge cover
- 3. Hex. bolt
- 4. Gauge glass
- 5. Sealing gasket
- 6. Mic
- 7. Protective gasket
- 8. Protective gasket
- 9. Cushion gasket
- 10. Packing strip

SPECIFICATIONS

- NO. OF PORTS : NO. 5~NO. 7
- MAX. PRESSURE : 150kgf/cm²
- MAX. TEMPERATURE : SAT. TEMPERATURE.

DIMENSIONS

Unit : mm

Models	Side of Gauge mounting against boiler drum	No. of Ports	Center to Center H	ℓ ₁	ℓ ₂	Visible length B
5GC-200B	 Right hand	5	600	240	360	310
	 Left hand	7	760	320	440	454

The dimensions in the table show are standard. Consult with our factory when other dimensions are required.

◆ TWO-COLOR MULTI-PORT TYPE LEVEL GAUGES

DESCRIPTION

SGC-300B

Max. Pressure : 225kgf/cm²
at the saturated
temperature



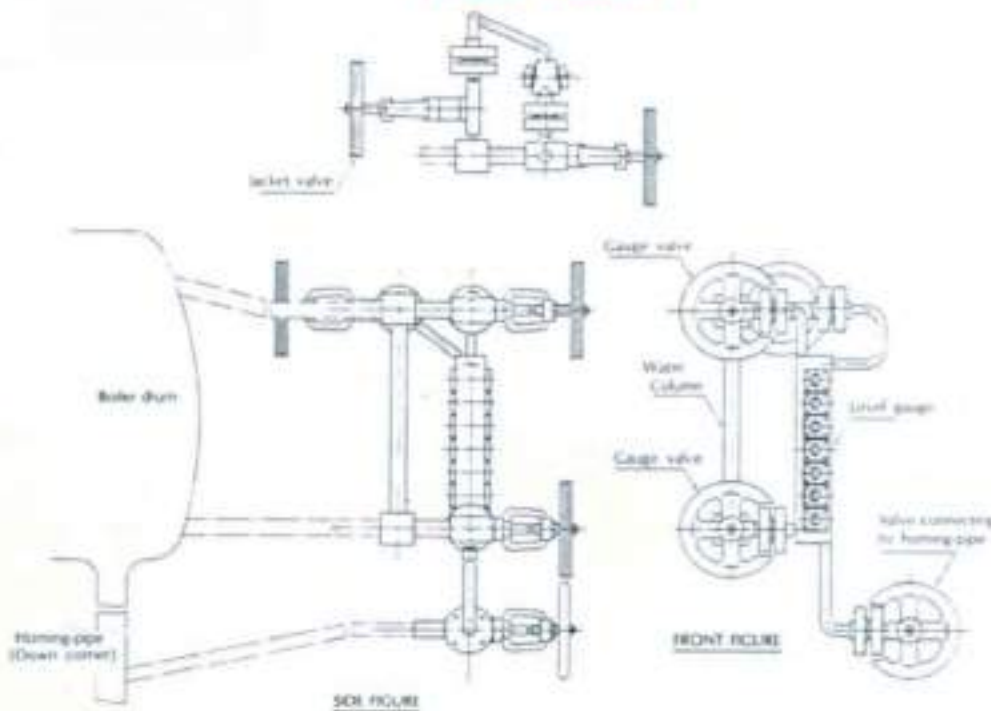
The Model SGC-300 is the multi-port type water level gauge that has been designed and developed by us for use of the boilers of thermal power stations, based on our own technology accumulated as the manufacturer of water level gauges.

The body of the gauge has been machined out of the best selected steel material that is compatible against high temperature, and every component that is assembled in the gauge is the part that has passed our strict quality control system. Our long experienced engineering capability has been applied to analyze structural strength of the gauge, so that it has made the gauge most suitable for steam service of the ultra super high pressure 225kgf/cm².

A difference of water level between the level in the boiler drum and that of the gauge, which is bound to occur due to high temperature, is eliminated to that of the minimum because of a special plumbing layout that was specifically designed and engineered by us. Also, every prudent consideration has been added in order to prevent an occurrence of sudden and abnormal change of the water level that has oftenly seen with the conventional type level gauge put in use under very critical steam servicing condition.

The gauge being with multiple numbers of ports, it offers a feature of economical maintenance since replacement of gauge glass can be carried out for each port independently.

PLANE FIGURE



◆ MAGNETIC FLOAT TYPE LEVEL GAUGES

INTRODUCTION

In nowadays, the security and environment presevation are the most important topics in the chemical industry. For this reason, the instruments of level gauge also have been required more complete. In order to meet this need, we have developed MG Type Magnetic Level Indicator.

We are also very proud that, so many our products have been used in the dangerous of flammable, explosive and toxic places for a long time, and have had a great reputation.

As a specialist of the level indicator, we have improved our products by our long and rich experiences. Here, we are full of confidence to present the all kind of MG-type Magnetic level Indicator, which can meet wide range variety of highpressure and vacuum, high temperature and low temperature use.

OUTLINE OF MG TYPE LEVEL INDICATOR

MG type level indicator is an instrument for indicating the fluid level. It has a magnetic float inside the non-magnetic column and an indicator outside the column. The indicator indicates the fluid level by means of magnetic force of magnetic float inside the column.

The indicator is completely seperated from the fluid container.

The level of liquid phase and gaseous phase can be distinguished clearly by the red and green colors.

FEATURE

It changes the image of sight glass gauge.

1. Non-visible part is very small and can be connected in series to inspect any height of the level.
2. It can measure the boundary surface of two kinds liquid which have different specific gravity.
3. It can be used for the underground tank.
4. It can do on-off control by using of level switch.

We can ensure it's distinguished safety.

1. There is no trouble of broken glass as there is no glass component in it.
2. The level switch is explosion proof (d2G4 class), so it may be used for the explosive, flammable and toxic fluid. (Hermetic type is only for the general use.)

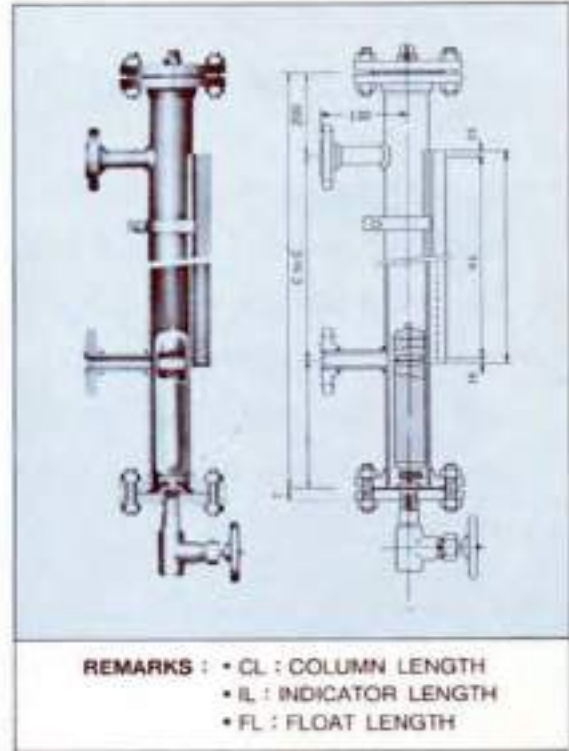


◆ MAGNETIC FLOAT TYPE LEVEL GAUGES

MODEL SMF-50A

■ STANDARD SPECIFICATION

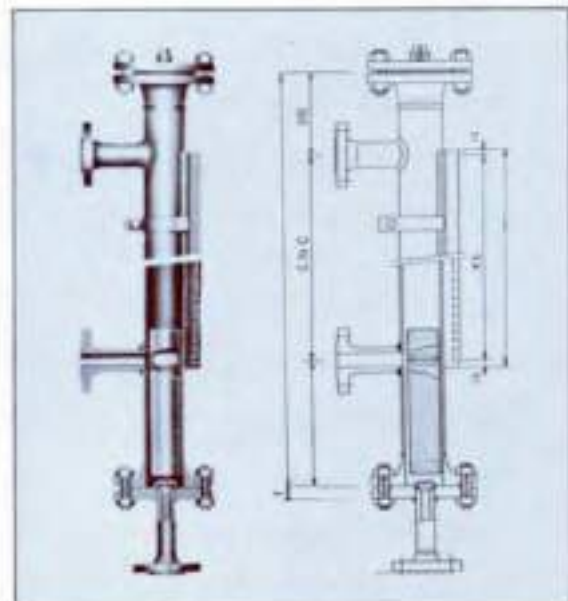
- COLUMN SIZE : 2B
- SCHEDULE : SCH. 10S, 40, 80
- FLANGE RATING : 150LB ~ 1500 LB
- MATERIAL : SUS 304, SUS 316, PVC
- INDICATOR METHOD : R
- MAX. pressure : 200kgf/cm²(at 38°C)
- MAX. TEMPERATURE : -196°C
- SPECIFIC GRAVITY : MIN. 0.35
- VISCOSITY : MAX. 1.5P



MODEL SMF-65A

■ STANDARD SPECIFICATION

- COLUMN SIZE : 2½B
- SCHEDULE : SCH 160
- FLANGE RATING : 2500LB
- MATERIAL : SUS 304, SUS 316, SUS 316L
- INDICATOR METHOD : R
- MAX. pressure : 300kgf/cm²(at 38°C)
- MAX. TEMPERATURE : 200°C
- SPECIFIC GRAVITY : MIN. 0.65
- VISCOSITY : MAX. 1.5P

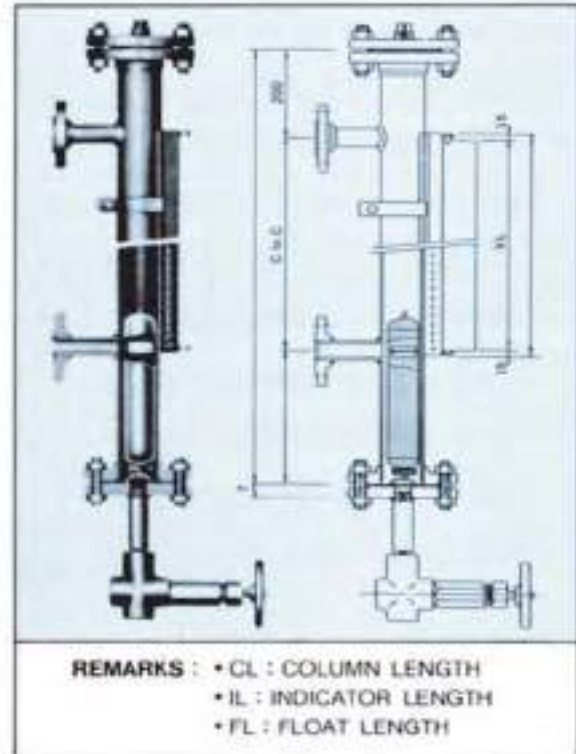


◆ MAGNETIC FLOAT TYPE LEVEL GAUGES

MODEL SME-50A

■ STANDARD SPECIFICATION

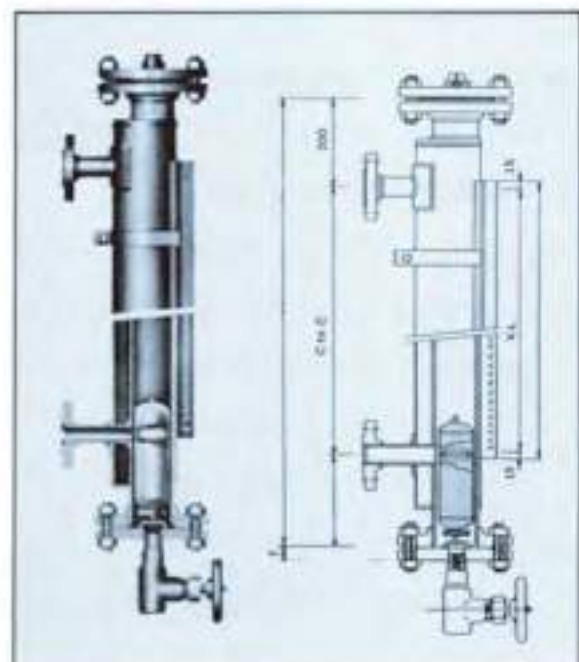
- COLUMN SIZE : 2B
- SCHEDULE : SCH. 10S, 40, 80
- FLANGE RATING : 150LB~1500 LB
- MATERIAL : SUS 304, SUS 316, SUS 316L
- INDICATOR METHOD : R
- MAX. pressure : 200kgf/cm²(at 38℃)
- MAX. TEMPERATURE : -196℃
- SPECIFIC GRAVITY : MIN. 0.35
- VISCOSITY : MAX. 1.5P



MODEL SMJ-50A

■ STANDARD SPECIFICATION

- COLUMN SIZE : 2B, JACKET PIPE : 3B
- SCHEDULE : SCH. 10S, 40
- FLANGE RATING : 150LB~600 LB
- MATERIAL : SUS 304, SUS 316
Jacket : SUS 304
- INDICATOR METHOD : R
- MAX. pressure : 200kgf/cm²(at 38℃)
- MAX. TEMPERATURE : 350℃
- SPECIFIC GRAVITY : MIN. 0.35
- VISCOSITY : MAX. 1.5P

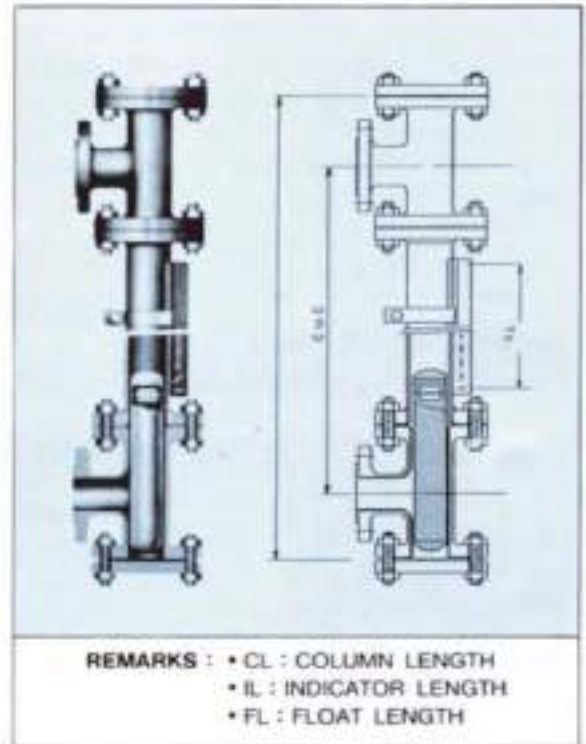


◆ MAGNETIC FLOAT TYPE LEVEL GAUGES

MODEL SMG-50A

■ STANDARD SPECIFICATION

- COLUMN SIZE : 2B
- SCHEDULE : SCH. 105, 40
- FLANGE RATING : 150LB~150 LB, 300 LB
- COLUMN MATERIAL : SUS 304
- LINING MATERIAL : TEFLON FEP, PFA, RUBBER
- INDICATOR METHOD : R
- MAX. pressure : 50kgf/cm²
- MAX. TEMPERATURE : -196℃
- DEPEND ON LINING MATERIAL :
- SPECIFIC GRAVITY : MIN. 0.7
- VISCOSITY : MAX. 1.5P



MODEL SMU-50A

■ STANDARD SPECIFICATION

- COLUMN SIZE : 2B
- SCHEDULE : SCH 105
- FLANGE RATING : 150LB, 300LB
- MATERIAL : SUS 304, SUS 316
- INDICATOR METHOD : R
- JACKET CONNECTION : NPT_{1/2}(STD)
- MAX. pressure : 10kgf/cm²(at 38℃)
- MAX. TEMPERATURE : 350℃
- SPECIFIC GRAVITY : MIN. 0.8
- VISCOSITY : MAX. 1.5P



◆ MAGNETIC FLOAT TYPE LEVEL GAUGES

MECHANISM

The level switch is installed on a certain place of column or magnet chamber. It operates ON-OFF control by means of magnetic force of the float when it comes up or down to the exact place of switch located.
(The switch is constructed as explosion-proof JIS D2G4 class).

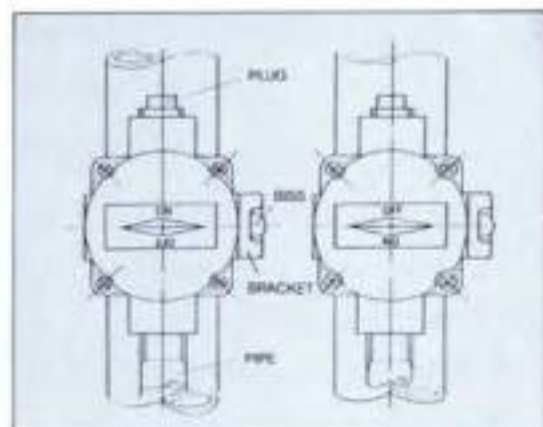
SPECIFICATION

Model No.	MS-10	EXMS-90
Max. current DC-A	0.5	0.5
Max. voltage DC-V	100	600
Temperature range	-10~80	-10~80
Piping	PF 1/2	PF 1/2
Remark	General use (JIS CO920)	Explosion-proof (JIS d2G4)



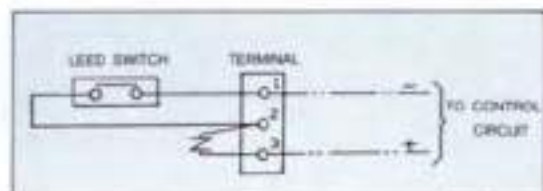
OPERATION AND INSTALLED DIRCTION

Alarm switch has the self-holding type leed switch. That is, when the N pole of magnet float is coming near, the switch will be closed(ON). After the magnet float passed by, the switch still remain closed (ON). And when the magnet is coming back, the switch will be open (OFF) again. And after the magnet passed away, the magnet passed away, the switch still remain open (OFF) also.
When the switch is installed upside down, the on-off operation of above will be revised.
Therefore, the operation (ON-OFF) is easy to change on the side.



SPECIFICATION

As our switch has no polarization, it makes no problem in electric circuit whether wires are connected with terminal 1 or 2.



◆ MAGNETIC FLOAT TYPE LEVEL GAUGES

ROTOR TYPE(R)

Structure : rotating flappers are installed on the non-magnetic case at intervals of 1cm.
It turns according to fluctuation of magnetic float.
Liquid part is indicated as RED and gaseous part as GREEN.

Feature :

1. The liquid phase and gaseous phase are indicated by red color and green. Color respectively, so that it is very easy to inspect from long distance.
2. It doesn't fail to indicate even at the sudden change of fluid level.
3. There are three standard size of 1000mm, 750mm, and 500mm length for your selection.

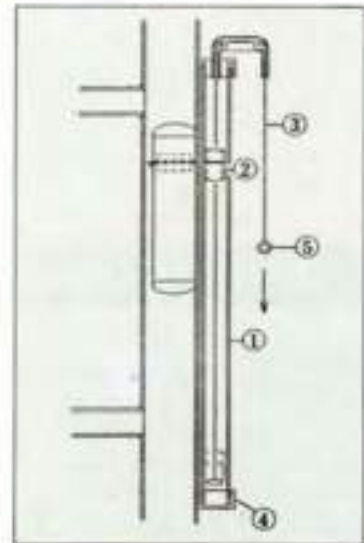


POINTER TYPE

Structure : A magnetic pointer is put in the transparent container. It moves up and down along with the magnetic float in the fluid level at exact position.

Feature :

1. The structure is simple, so that, the price is more reasonable.



FLOAT

	LENGTH L (mm)	CLOSING TYPE (MAX. PRESS. 50kg/cm ²)		CLOSING TYPE (MAX. PRESS. 30kg/cm ²)		SOLID TYPE (MAX. PRESS. 300kg/cm ²)	
		FLOAT MATERIAL	Sp. Gr (MIN.)	FLOAT MATERIAL	Sp. Gr (MIN.)	FLOAT MATERIAL	Sp. Gr (MIN.)
1	250	SUS316TP	1.132	TP35	0.780	SPECIAL RESIN	1.036
2	300	↓	0.984	↓	0.655	↓	0.932
3	350		0.886		0.575		0.861
4	400		0.816		0.530		0.812
5	450		0.763		0.490		0.774
6	500		0.722		0.455		0.744
7	550	↓	0.689	↓	0.435	↓	0.722
8	600		SUS316TP		0.662		TP35