

**OLYMPUS**<sup>®</sup>

Your Vision, Our Future

Industrial Videoscope

**IPLEX RX/ IPLEX RT**

***IPLEX***

# Superb Image Quality with a Portable Videoscope

**NEW**



# A Videoscope with a Clear Vision

The IPLEX RX and IPLEX RT provide unsurpassed image quality yet are user-friendly, and boast a portable design. The videoscopes are ideal for inspectors who require uncompromised and precise inspections.

## Exceptional Image Quality

- Our brightest and sharpest image quality
- Recorded images and movies in high quality
- Expanded image adjustment capability\* for optimum inspections
- Large 6.5 in. monitor



Sharp and bright image of engine combustion chamber

## Operation with Ease

- Compact and portable casing
- Multi-positioning design for comfortable inspection for any application
- Excellent scope maneuverability with TrueFeel™ and Tapered Flex™ technologies
- Intuitive and quick operation



Comfortable operation using shoulder strap

## Rugged and Durable

- Heavy-duty system compliant with MIL-STD and IP55
- High-durability insertion tube withstanding crush and abrasion
- 100 °C / 212 °F capable insertion tube with temperature alert\*



The IPLEX RX faces the elements on a rainy day

## Advanced Functionality

- Stereo Measurement\* for objective inspections (to be released in 2014)
- PDF display function\* enabling efficient inspection work
- InHelp™ software to streamline all steps from inspection to report generation



The IPLEX RX monitor displaying a manual PDF during inspection

\*IPLEX RX only

# Exceptional Image Quality to Improve Inspection Quality

## Our Best Image Quality

The IPLEX RX and RT feature the best image quality of our videoscopes. Our unique PulsarPic™ image processor reduces noise and sharpens images, resulting in the exceptionally high resolution image.

The IPLEX RX and RT faithfully and brightly reproduce very small defects, and the sharp and clear images enable accurate and reliable inspections.

## 2X Brighter Illumination System

The IPLEX RX and RT feature a new LED illumination system that is approximately twice as bright as conventional videoscopes, while dynamically adjusting light output to reduce halation when metal or reflective surfaces are inspected.

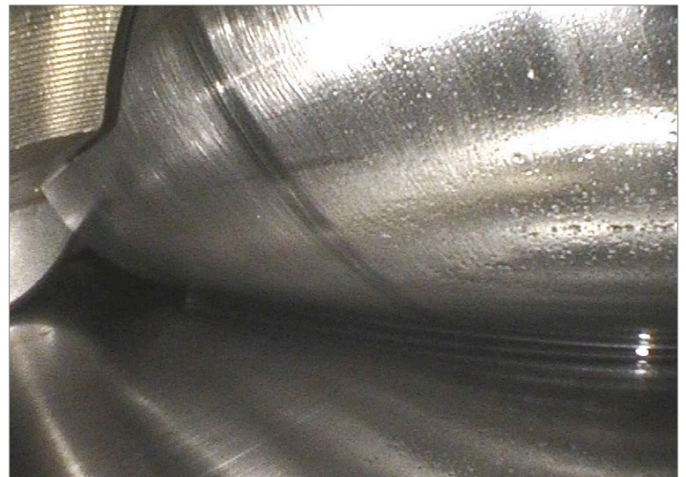
The PulsarPic™ image processor interacts intelligently with our illumination system to deliver an optimized amount of light and gain enhancement to provide images that are very clear and sharply defined.

---

## Diverse Applications



Turbine blades



Bearing of wind gearbox



Combustion chamber



Welding

# Rugged and Durable for Reliable Performance Even in Harsh Environments

## Robust Body

The IPLEX RX and RT pass the impact tests including vibration and drop from a height of 1.2 m/ 3.9 ft.

The tough system compliant with Military Standards withstands rough treatment and ensures reliable operation in difficult environments.



## Operable in All Weather

The IPLEX RX and RT comply with internationally recognized Military Standards (MIL-STD-810F/G and MIL-STD-461F)\* as well as IP55, passing a range of severe environmental tests, such as blowing rain/dust, high humidity, and icing rain. In addition, the daylight view monitor featuring low-reflection displays clear images even under bright sunlight.

\*Reference page 11 for MIL-STD compliance details



## High-durability Insertion Tube

Operators are often required to inspect objects inside narrow paths with rough or sharp surfaces. The insertion tube of the IPLEX RX and RT has a crush and abrasion-proof design and is covered with a tough, special processed tungsten braid.

In addition, the IPLEX RX insertion tube features high temperature resistant up to 100 °C/ 212 °F. A high temperature sensor beeps and display visual warning to prevent overheating.



Special processed tungsten braid